

**GAUZE**

FUTURE

CAREER

SERIES



# RESIDENCY IN SAUDI ARABIA

**PREPARED BY:**

*Noura Alshathri*

*Mohammed Alhumud*

*Nasser AbuDujain*

CLICK TO ACCESS THE  
AMAZING VIDEO!



Dr. Saad Alghanem

## 3 APPLICATION PROCESS

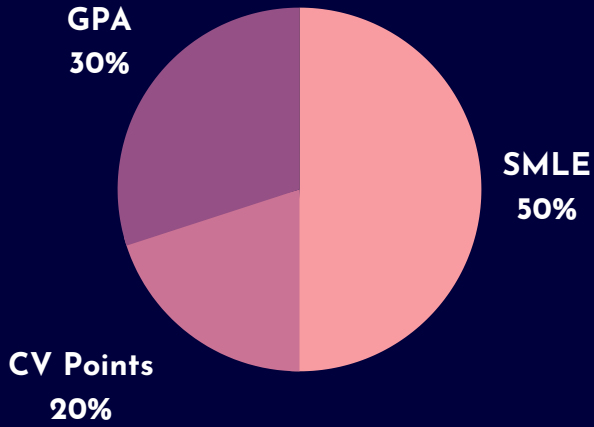
## 6 TIPS FROM A RESIDENT

## 7 HELPFUL LINKS

# APPLICATION PROCESS



## Application steps



## Latest marks breakdown



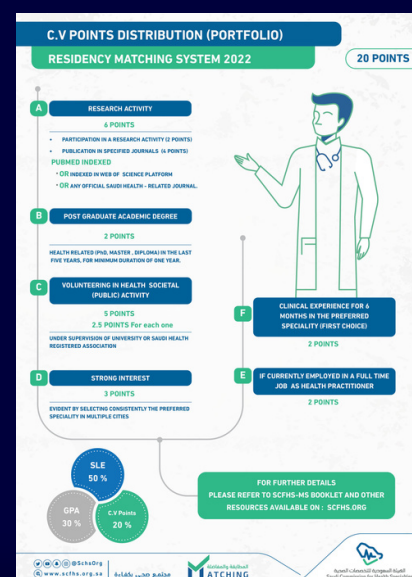
## Latest Application Timeline

## 1 Preparing your CV \*(for fresh graduates)

Check out the most recent SCFHS matching booklet for most recent changes, and prepare them. Last requirements were as shown in the picture below.

What to prepare for each? (letters are according to the pictures)

- A - 1 (2 Points)
  - Save any research proposal you submit to the Institutional Review Board (IRB), make sure all the pages are signed by the principal investigator and stamped by the IRB office.
  - Save any Ethical Approval from the Institutional Review Board (IRB), make sure it includes the signature and stamp of the IRB.
  - Get a written letter with your institution's official paper signed by your supervising faculty member indicating your work on any research project.
- A - 2 (4 Points)
  - Whenever submitting a paper to a journal, **MAKE SURE IT MEETS THE CRITERIA!**
  - How?
    - **MOST IMPORTANT STEP IS CONSULTING YOUR SUPERVISOR!**
    - Checking if a Journal is -potentially- PREDATORY (FAKE):
      - Look them up in <https://beallslist.net/>
      - Look up articles showing on their site in Pubmed, if the name/link is different then they might be predatory.
    - Checking if a Journal is Recognized by Web of Science:
      - Look them up in <https://mjl.clarivate.com/search-results>
    - Saudi Journals?
      - Look them up in University Websites
- C (5 Points) - Points per campaign
  - Make sure your volunteering works are directed towards the community and not healthcare workers or students for them to count.
  - Make sure any certificate you have fits the aforementioned criteria.
    - Health Volunteering Platform or National Volunteering Platform certificates are directly accepted.
    - For other volunteering works, make sure the following is included:
      - Role: Organiser or any meaningful role, not Attendee.
      - DATE!
      - STAMP AND SIGNATURE!
      - FULL NAME
      - AUDIENCE: THE COMMUNITY
- D (3 Points)
  - No need to prepare anything, they're automatically gained by choosing the same specialty as your first 5 choices in different cities while applying.
- B, F & C (2, 2 & 2 Points)
  - Not applicable to fresh graduates.



## 2 Taking the SMLE

The SMLE is the Saudi Medical Licensing Exam, it consists of 300 MCQs covering 4 main medical specialties (Internal Medicine, General Surgery, Pediatrics and Obstetrics & Gynecology). Scoring is out of 800 or 100.

## 3 Preparing the required documents

- 1- Portfolio documents (All as PDF).
- 2- GPA Certificate.
- 3- Academic Transcript.
- 4- MoHe equalization letter.
- 5- Internship letter showed End date.

\*interns can ask their universities to give them a letter stating the end date of the internship year.

- 6- National ID.

## 4 Applications

Applying through <https://matching.scfhs.org.sa/>.

## 5 Nominated? Prepare for the Interviews

First and most important tip for the interviews is ATTENDING ALL OF THEM, not matter how confident you are about getting accepted in a specific center.

## 6 Accepted? Complete the registration

Complete the registration steps on the SCFHS's website and pay the fees.

If you aren't in a MoH hospital, you may need a sponsor:

Temporary contracts:

- Provided by some Institutions such as: KFSH-RC , National Guard Hospital, KKUH.

Ministry of Health Contract

- For those accepted in MOH hospitals and Saudis who were accepted in the matching but have no sponsors.

Military Jobs

- Ministry of Interior, National Guard, or Ministry of Defense.

Internal Scholarships

- For those who have jobs and get accepted in the matching.

## SAMPLE TITLE



Train in your preferred specialty and get recommendation letters and get known in your preferred centre(s).



Acceptance is getting extremely competitive, work hard on your SMLE score because it is the most important single determinant.



Attend conferences and try to present in them.



Acceptance is getting extremely competitive, work hard on your SMLE score because it is the most important single determinant.

# HELPFUL LINKS



 [SCFHS's Website](#)

 [Saudi Medical Student Blog](#)

 [Nemoz SMLE Guide - by the amazing Nasser M. AbuDujain.](#)

 [Nemoz SCFHS Application Guide - by the amazing Nasser M. AbuDujain.](#)

 [Future Pathways](#)

GAUZE

FUTURE

CAREER

SERIES

